



disan[®]

MATRIX
PLUS

User's manual
MATRIX RANGE

**SUMMARY**

1.	Introduction	2
2.	Unpacking	3
2.1	Control of accessories	4
3.	Construction features.....	5
4.	Technical data.....	6
5.	Installation.....	7
5.1	Place of installation	7
5.2	Inlet reversibility	7
5.3	Fixing of central unit	9
5.4	Connection to pipe network.....	11
5.5	Electrical connection.....	12
6.	Use of central unit.....	13
6.1	Use of accessories	13
7.	Maintenance	14
7.1	Technical advice.....	14
7.2	Ordinary maintenance	14
8.	Troubleshooting	16
9.	Guarantee.....	19
9.1	Terms of guarantee	19
9.2	Coupon of guarantee	19

1. Introduction

Congratulations for purchasing a DISAN central vacuum unit of Matrix range. A combination of technology, simplicity and well-being. The Matrix range is ideal: compact, practical and really powerful and available in two different models: Matrix PT with disposable bags and Matrix FF with permanent flat cartridge and easy collection of the dust.

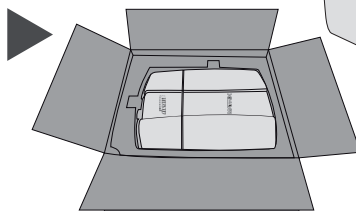
2. Unpacking

Follow the instruction printed on the cardboard box to move the central unit to the location selected for installation.



Arrange the cardboard box on the floor, with the opening side upward and cut the adhesive tape.

Open the box, remove internal cardboard and lift with both hands the central unit with the nylon bag. Arrange it on the floor and remove the dust protection bag.

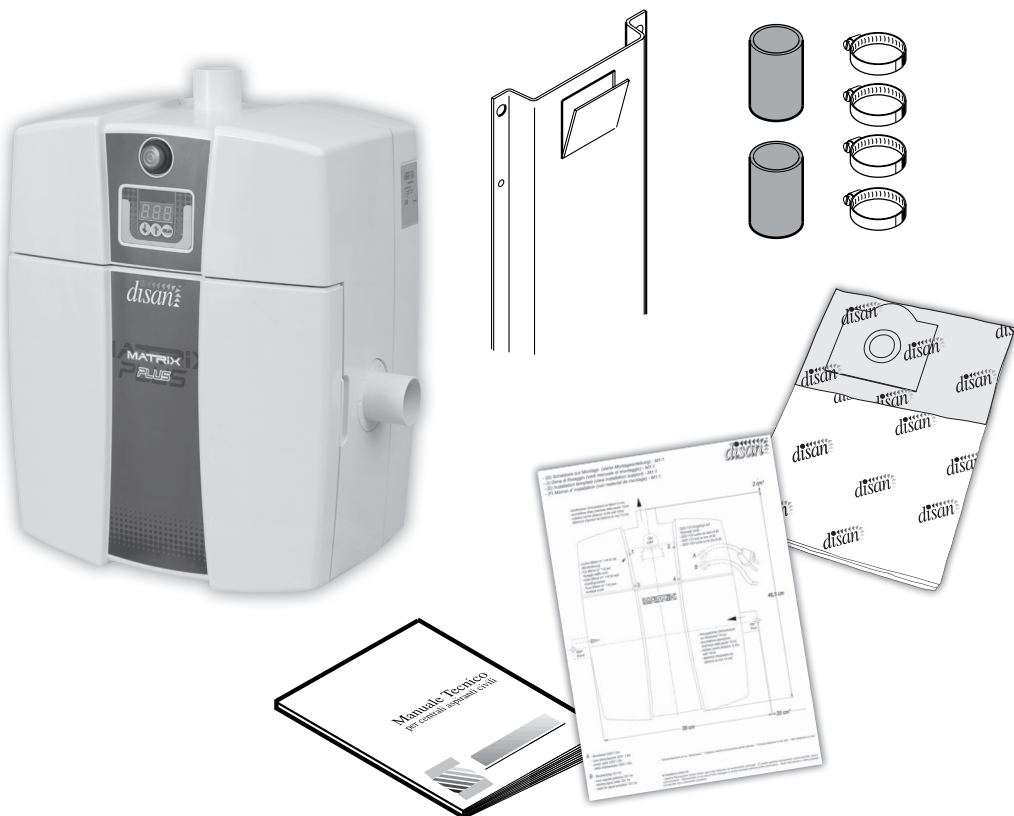


Collect all the accessories in the box and dispose in accordance with the prescription.

2.1 Control of the accessories

Check inside the box that all accessories are present:

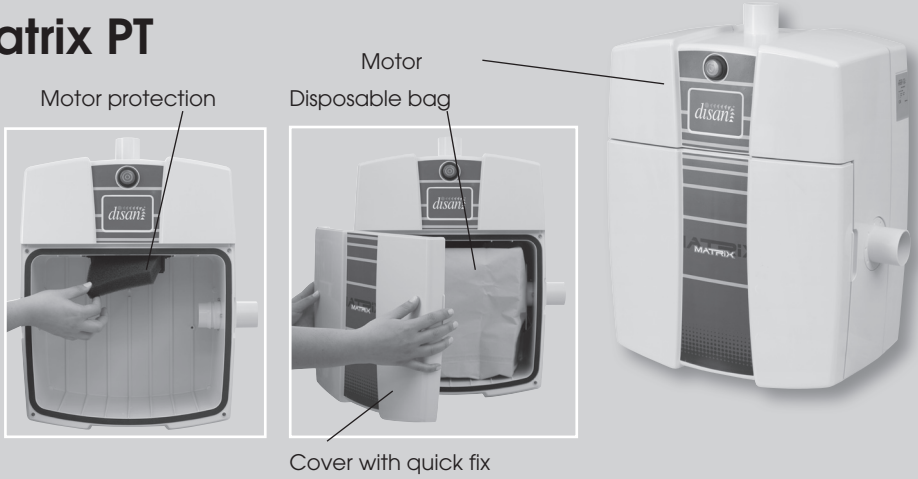
1. Central unit
2. Metal fixing plate
3. Two rubber muffs
4. Four clamps for rubber muffs
5. Paper bag
6. User's guide and Guarantee coupon
7. Installation template



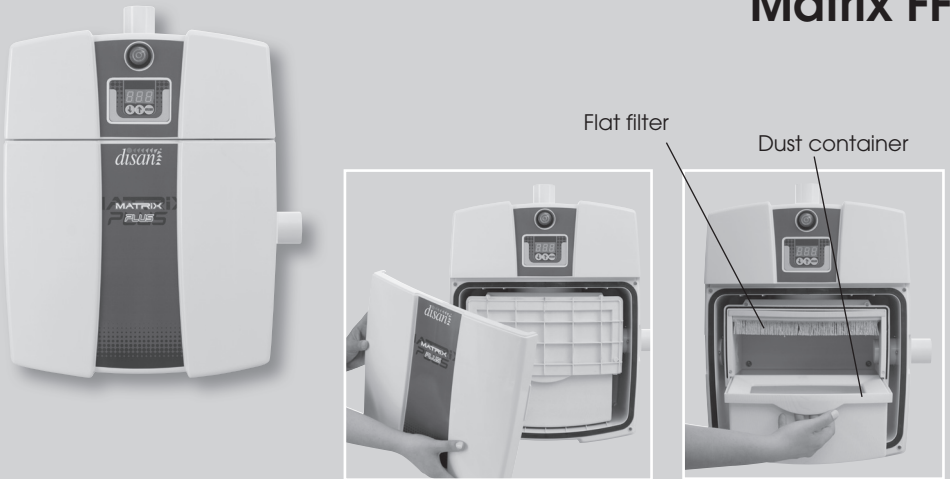
Every central unit manufactured and packaged in our facility is standing an operational test and certified by every operation.

3. Construction scheme

Matrix PT



Matrix FF



4. Technical data :

Field of application	Matrix - PT		Matrix - FF	
area up to	m2	130	m2	130
max. tube length	m	ca. 30	m	ca. 30
max. inlet valves	Stk.	3-4	Stk.	3-4

TECHNICAL FEATURES:

Power	kW	1,5	kW	1,5
Motor stage		1		1
Inlet power supply	Volt	230	Volt	230
IPX Protection degree		IP55		IP55
Max Vacuum	mbar	260	mbar	260
Max air volume	m3/h	220	m3/h	190
Airwatt @ ø 32mm	W	421	W	378
Filtration		Paper Bag		Flat filter
Filtration surface	cm2	3350	cm2	5200
Housing		ABS		ABS
Dust container capacity	L	5	L	3,5
Max Noise Level	dB	59	dB	59
Size	cm	23x39x49,5	cm	23x39x49,5
Weight	kg	7,5	kg	7,6

5. Installation



- ATTENTION -
THE UNDERMENTIONED OPERATIONS MUST
BE CARRIED OUT BY QUALIFIED STAFF



5.1 Place of installation

The installation of central unit is following to the layout of the piping set by an appointed installer. Considering the construction's features, the protection class IP55 and the moderate noise level, the Matrix units can be installed even outdoor.

The minimal room for installation chamber is
70 x 60 cm (lxh)

5.2 Inlet reversibility

The Matrix unit is usually delivered with inlet connection assembled on the right side of the unit. When necessary, it is possible to switch the central unit from right to left, by assembling the inlet on the left side.

1. Open the front cover with quick-fix magnets
2. Loosen the 3 screws from inside and remove the inlet muff
3. In the opposite side unscrew in the same way the inlet cap

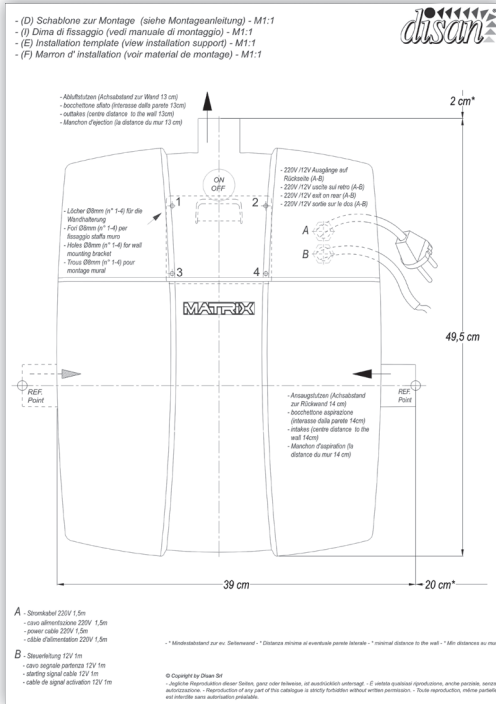


4. Change the inlet muff with the inlet cap

Paying attention to the right positioning of the joints.

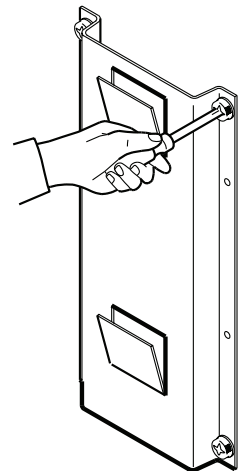
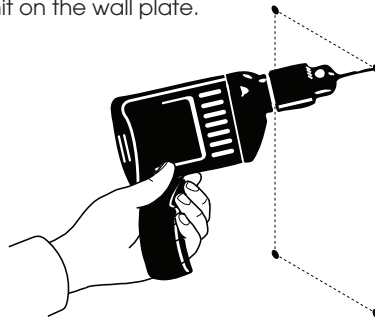
5.3 Fixing the central unit

Inside the packaging you will find the special installation template to easy the position and fixing, as well as the installation wall plate.



1. The template should be fixed on the wall where the central unit should be installed. For reference the inlet and outlet should be considered.

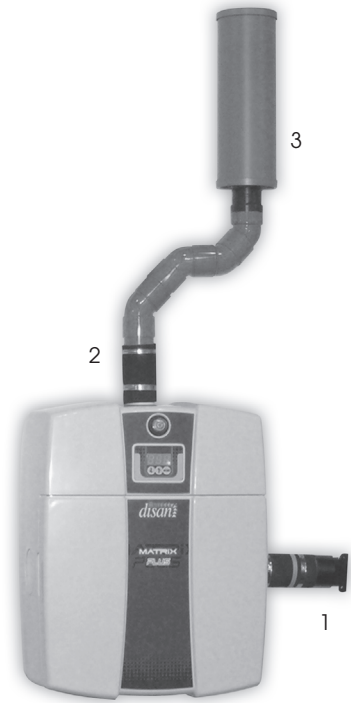
2. Mark the drilling point through the template.
3. Arrange the plate on the wall.
4. Hang the central unit on the wall plate.



5. Hang the suction unit the frame.

5.4 Connection to pipe network

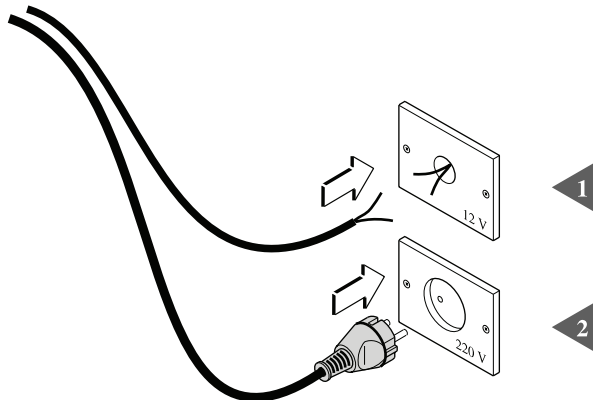
1. Connect with the muff and clamps included the middle side inlet in with piping network
2. Connect with the muff and clamps included the outlet with the exhaust line.
3. The silences (optional) can be connected near the exhaust grid.



5.5 Electrical connection

Before plugging in the central unit make sure that the main power supply correspond to the voltage requirements written on the label, which referred to the data on the identification plate. The manufacturer declines all responsibility for damages to persons or objects due to an electric system not in compliance with the regulation in force.

- Connect the low-voltage starting cable
- Plug-in the main electric cable.

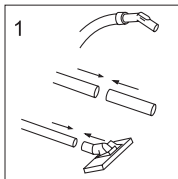


6. Use of central unit

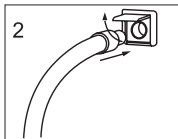
The cleaner is manufactured in order to minimize the output of noise both in the body as in the motor. During operation please pay attention to the following advices:

- Do not allow children to operate the cleaner without surveillance.
- Do not allow the suction of the handle to come into contact with eyes or ears; Do not insert fingers in the handle;
- Pay attention to the ceasing of the cleaner; Due to the vacuum pressure in the tubing and in the motor, the system remains active for a couple of second after switching it off;
- Disan takes no responsibility for any harm or damage done due to misuse of the central unit.

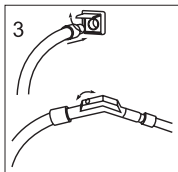
6.1 Use of accessories



1) Place the suitable ends together: Into the handle; into the two chrome plated extensions or into the chrome plated telescopic wand.

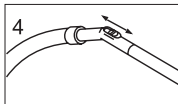


2) Lift the cover of the inlet valve and place the metal cuff or the vacuum hose.

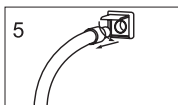


3a) If an automatic inlet is being used the system will start when the inlet flap is opening. vacuum

3b) If using a semi-automatic inlet, the unit will start when the hose is inserted into the valve or when the switch is operated on the handle of flexible hose.



4) In the event of excessive suction make use of the pressure regulation on the handle.



5) When vacuuming is finished, the unit can be switched off by removing the hose from the inlet valve and carefully closing the flap.

7. Maintenance

7.1 Technical advice

If during operation an irregularity is experienced that is not dealt with in following section "maintenance of central unit", please switch off the cleaner and get it inspected by a qualified customer service.

No maintenance or repair work should be carried out on the central unit unless it is disconnected from the main power supply.

Disan recommend a general check of the electric motor, bearings, cables every 4/5 years.

7.2 Ordinary maintenance.

All this operations have to be carried out on the central unit disconnected by the main power and when the cleaner and other parts are chilled from the surrounding temperature. This maintenance is made to keep the cleaner working properly and to extend the lifetime of the cleaner.

Emptying of dust container

Modell Matrix PT:

1. Open the front panel, which is closed with quick-fix magnets.
2. Remove the disposable paper-bag filter, close it with the flap and waste in the proper trash.
3. Clean the motor protection by shaking and knocking

The cleaning of motor protection can be done also with cold water, but before use pay attention this must be completely dry.

4. Before inserting a new paper bag filter shake it until it takes the maximal volume.

Beware that rubber joints are in a good shape and they are in the proper place.

5. Close the front panel



Modell Matrix FF:

1. Open the front panel 1 and the internal panel 2, both with quick-fix magnets
2. Slide out the dust container, remove the funnel and waste the content in the proper trash.
3. Clean the flat filter by shaking and knocking or even with cold water, but make sure in the second option that this must be completely dry before to use it again.
4. Close the front panel, the cleaner is now ready to be used again.



The device is now ready for use again

8. Troubleshooting (Table page 17)

1. If **vacuum power** at the inlet valve seems too weak the first investigation to do is:

On Matrix PT check if the paper bag filter is full (if so proceed to “emptying the dust container”) and check also the motor protection.

On Matrix FF check if the dust container drawer is full and the condition of the flat polyester filter.

2. Safety protection. The 10 Amp. fuse blows if the vacuum motor is exposed to an overload by main power or if the motor is defected.

3. Overheating. If the motor becomes overheated due to a choked filter or for a blockage in the piping, the thermostat will switch the motor off when temperature is over 90° C. It will restart when it is cooled down, after about 8-10 minutes. If after you have excluded that a stoppage somewhere between the motor and the handle has happened, call the customer service.

4. Flexible hose is blocked. If suction at the inlet valve is correct, but not on the handle, the flexible hose could be stopped. It has to be verified by sight, by digit pressure or with a probe.

5. **Blockages in the pipes.** Contact the Disan customer service.

6. **Simultaneous use of several inlet valves:** the Matrix range is conceived to be used by a single person at the time.

7. **Inlet valve seal damaged or not well secured.** The air loss in connection with a whistling noise by a closed inlet valve is caused by a not perfect sealing or screwing of the inlet with pipes. Check the tightness and if needed change the joints.

TROUBLESHOOTING CHART

	1	2	3	4	5	6	7
Absence of suction power	✓	✓	✓	✓	✓	✓	✓
Weak suction power	✓						✓
Motorbreak		✓	✓	✓	✓	✓	
The motor does not switch off							✓
Defective running of the motor			✓				
Voltage supply falls down					✓		

9. Guarantee

9.1 Terms of guarantee The guarantee conditions become valid from the date the system was first purchased. Always refer to professional advice on installation and maintenance problems. Any attempt by the customer or other persons to modify or repair the system with non original parts will automatically render the warranty void and the manufacturer will not be held responsible for any damage caused either to persons or their property.

The following relieves the manufacturer of any responsibility for warranty:

- Improper installation
- Improper use of the system or accessories
- Operating against the regulations of the respective country
- Use of non original spare parts failing to observe the operating instructions
- Total or partial inobservance of the present manual
- Not sending of guarantee coupon

The manufacturer will replace under guarantee any parts that are found to be defective due to faulty construction. All defective parts must be returned to the manufacturer for inspection in their technical laboratories and the parts will be replaced. The costs involved by taking apart, assembly and for the transport are responsibility of the purchaser. The guarantee issued by Disan will be valid if the coupon is received by the manufacturer or installer no more than 30 days after the purchase date. Replacement parts under guarantee will not be issued if the payment terms were observed by the purchaser. Any disputes will be resolved by the courts in Bolzano (Italy).

9.2 Coupon of guarantee. For the registration of your guarantee fricht fill in the coupon on the cover of the present book and insert the data reported on the identification label of your cleaner. Send it within 30 days from purchase.

Certificato di garanzia
Garantieschein
Coupon of Guarantee
Certificat de Garantie



da affrancare
zu frankieren
to stamp
d'affranchir

disan

Zentralstaubsauganlagen

Disan GmbH

Mitterweg Bozner Boden 13A • I - 39100 BOZEN

Tel: +39 0471 971000 • Fax: +39 0471 978888

info@disan.com • www.disan.com

disan

Certificato di garanzia - Garantieschein - Guarantee Coupon - Certificat de Garantie



Timbro e firma del venditore
Stempel und Unterschied des Verkäufers
Stamp and sign of seller
Cachet et signature

Data di acquisto:
Kaufdatum :
Date of purchase:
Date d'achat:

Indirizzo e nome dell'acquirente:

Anschrift und Name des Käufers :

Purchaser's name and address:

Nom et adresse de l'acquéreur: _____

GARANZIA 24 MESI - GARANTIE 24 MONATE - GARANTEE 24 MONTHS



central vacuum systems

Disan GmbH

Mitterweg Bozner Boden 13A • I - 39100 BOZEN

Tel: +39 0471 971000 • Fax: +39 0471 978888

info@disan.com • www.disan.com