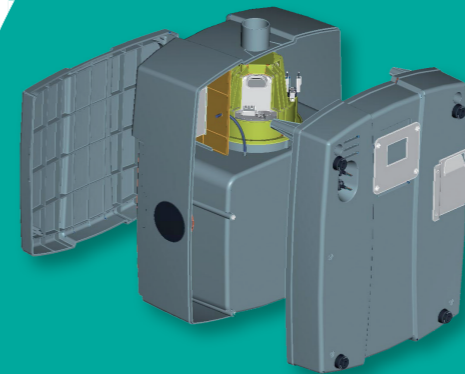




Disan is proud to introduce the new Matrix central unit. A combination of technology, simplicity and well-being. The Matrix is ideal: compact, practical and really powerful.

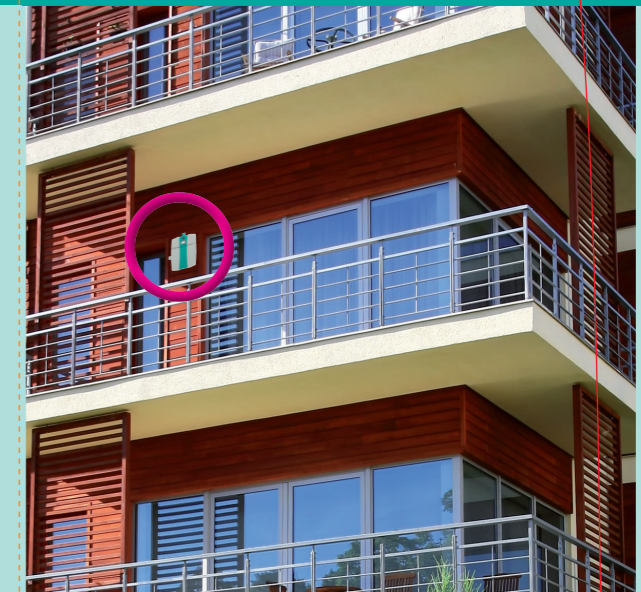
This really compact model will satisfy the requirements of modern buildings, with small surfaces, but really sensitive to costs.



Dual vacuum air intakes and outtakes for connection from right or left side. Changeable in only 3 minutes. Together with the fast fixing bracket can be fixed to the wall in seconds. All what you need to connect and fix it on the wall unit is included in the package.

Degree of protection from weathering IP55, whole housing in ABS. These features, coupled with low noisiness, allows the installation with external exposure on the balcony.

Silent like any other power unit in its class, thanks to central positioning of motors and internal sound suppression system.



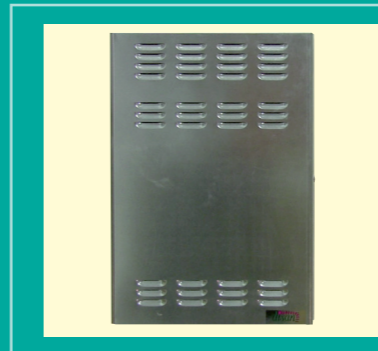
Modern design, soft and essential lines. A revolutionary and innovative shape, very rational, that breaks off with the traditional bean cans of the past. Ideal to remain visible from outside the house.



Extremely poor maintenance. Through the frontal panel with magnets, an easy access to bag changing or filter cleanings that takes only few seconds. No troubling operations and no dirty hands.



Compact dimension, offering space saving advantages and to be installed in hidden small places, but keeping an elevated air performance and large-capacity of dust container (up to 11 litres)

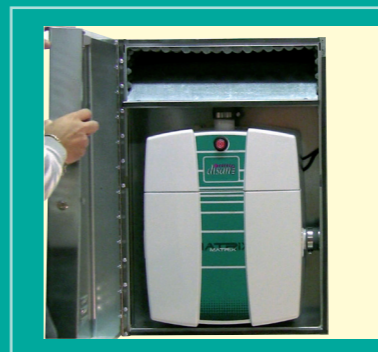


A metal enclosure is available to put Matrix inside the wall.

The enclosure is only 19 cm deep and include the silenced outlet.

The front door can be painted with the same colour of the wall for a perfect camouflage.

When put in place is ready to hold the Matrix unit only with a quick installation.



High efficiency motors, for ultimate air performances with an eye to the energy consumption. Serial thermic sensors, available with soft-start and progressive control of the power.



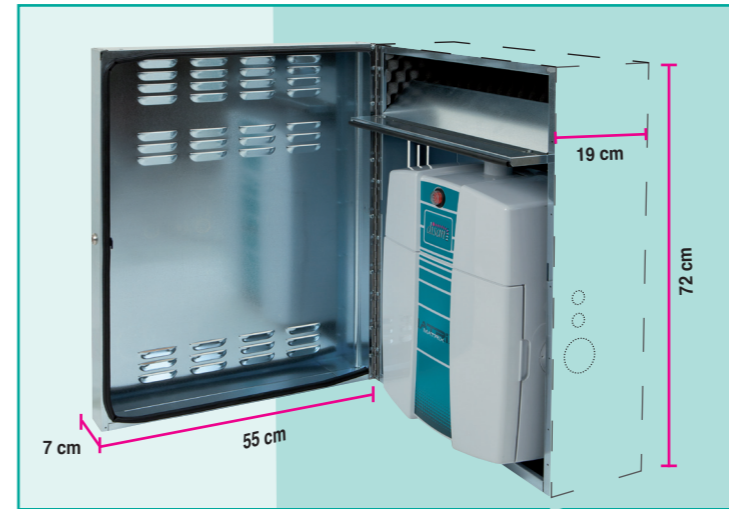


## Matrix PT Basic version

Primary filtration with hygienic and practical disposable bags with double layer and quick lock. Secondary filtration in expanded polyethylene (HEPA rated).



Model Matrix PT - This version is very simple: with disposable bag filter, motor protection, frontal switch, control board. Quite sober, but very reliable and economic.



Approximate application:	MATRIX PT	
Surface up to	m <sup>2</sup>	130
Length of tubing	m	ca. 30
Inlet socket max.	Stk.	3-4

Specifications:	MATRIX PT	
Motor power	Kw	1,5
Turbine stages	Stk	1
Voltage requirement	Volt	230
EC Safety degre		IP55
Suction power max	mbar	260
Airflow max	m <sup>3</sup> /h	220
Airwatt Ø32mm	W	421
Filter	paper bag	
Filter surface	cm <sup>2</sup>	3350
Housing		ABS
Dust capacity	L	11
Dimensions		23 x 39 x 49,5
Sound level	dB	59
Weight gross/net	kg	9,4/7,5



Made in Italy