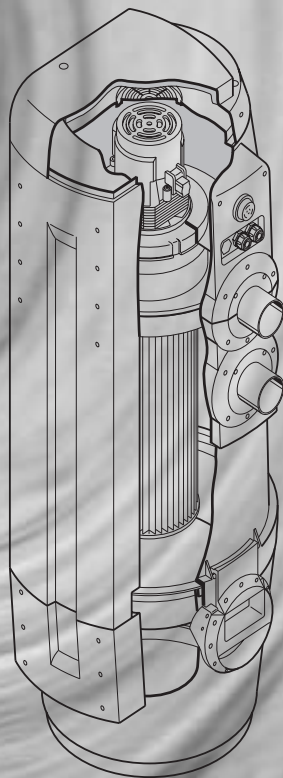




disan®

*Impianti aspirapolvere centralizzati
Zentralstaubsauganlagen
Central vacuum systems
Systèmes pour l'aspiration centralisée*

EVO 200
EVO 550



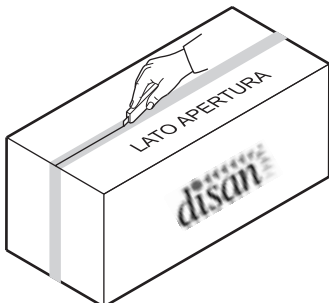
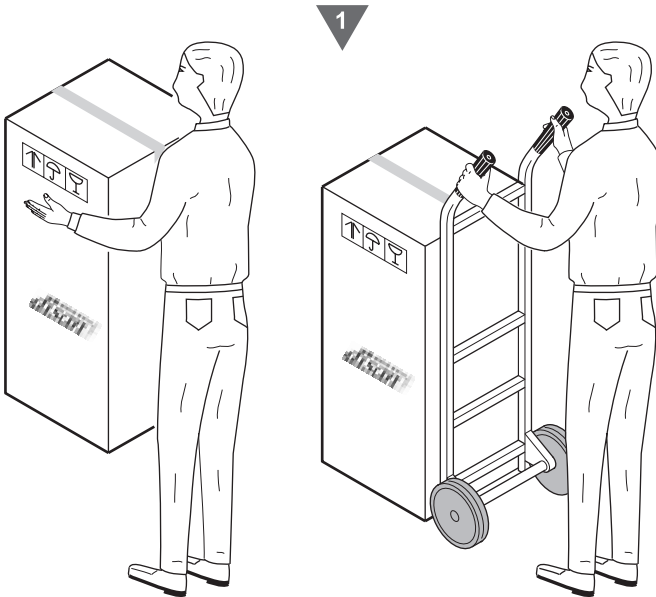
**ISTRUZIONI PER L'USO
BEDIENUNGSANLEITUNG
USER'S GUIDE
MANUEL D'UTILISATION**

1 - UNPACKING

1.1 Handling and unpacking

Follow the instructions printed on the cardboard box to move the suction unit to the location selected for the installation.

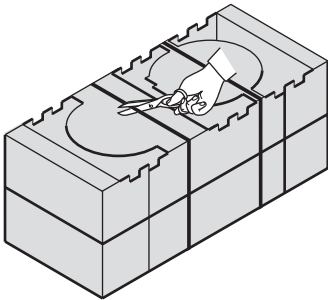
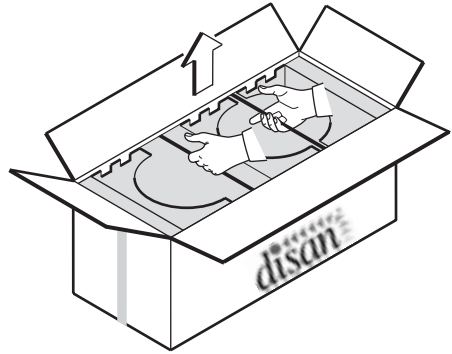
If necessary, use a trolley to move the suction unit or ask somebody to help you.



2 Arrange the cardboard box on the floor, with the opening side upward and cut the adhesive tape.

Open the box, take the straps with both hands and lift the suction unit. Arrange it on the floor in a horizontal position.

3

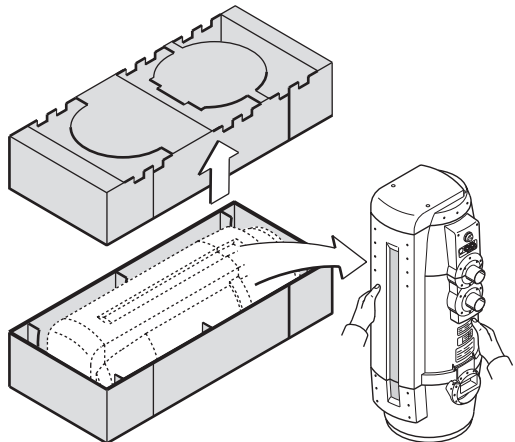


4

Cut the straps.

Remove the upper cardboard protection, lift the suction unit and arrange it on the floor in a vertical position. Remove the dust-protection bag.

5



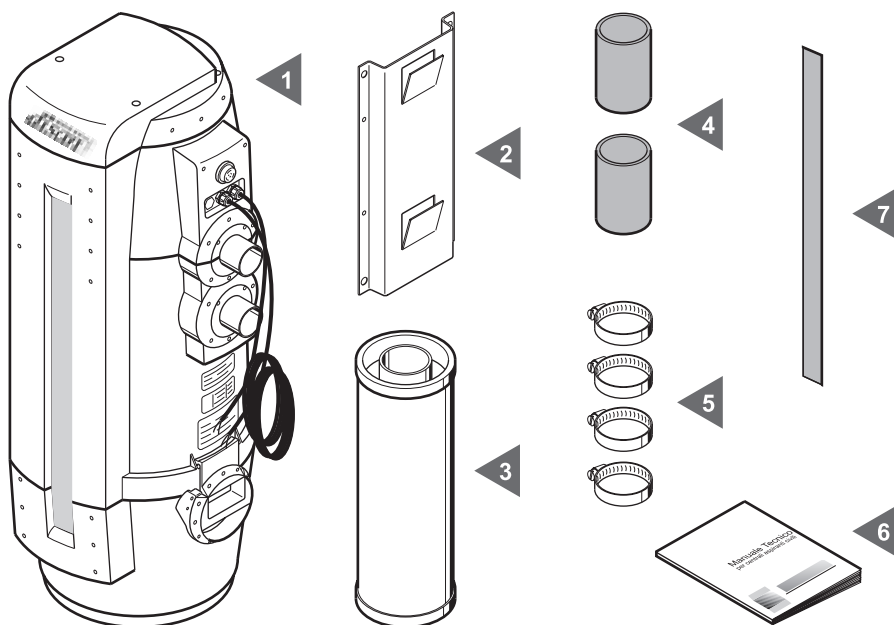
6

Take out all the accessories contained in the cardboard box and dispose in compliance with the relevant provisions in force.

1.2 Control of the accessories

Check what you have received:

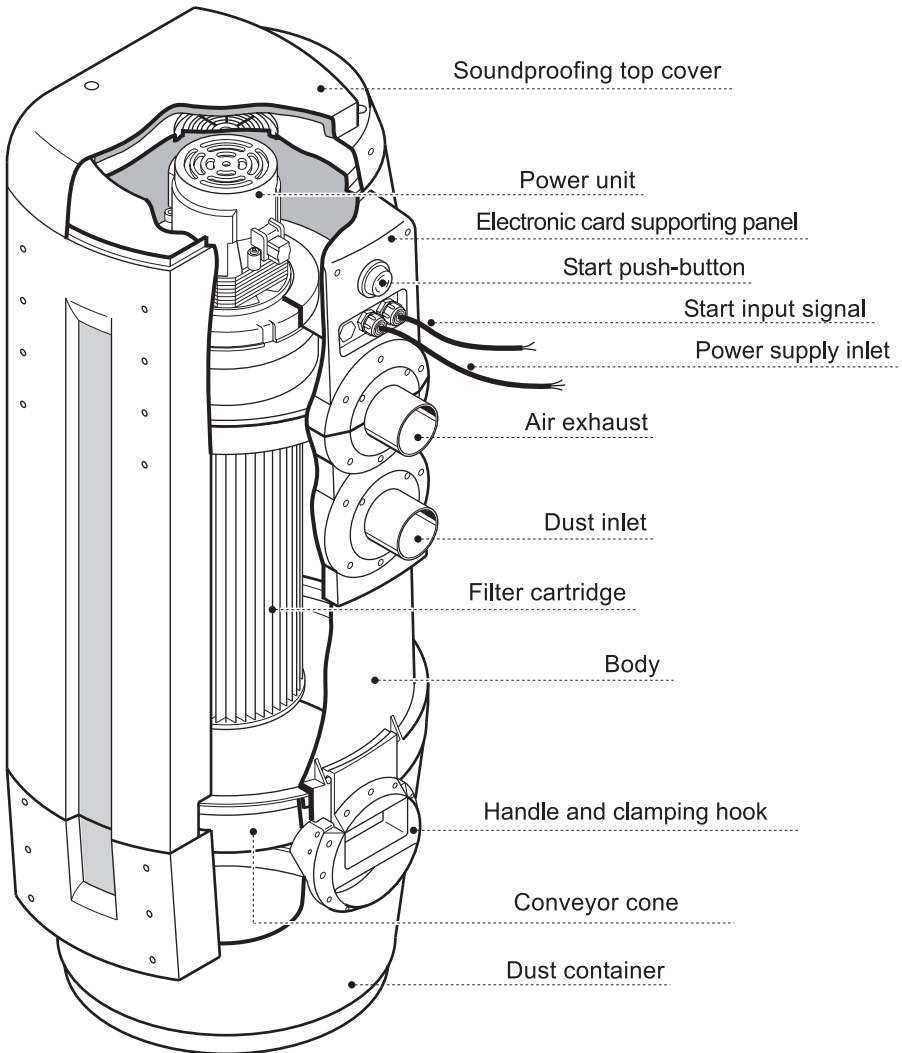
- 1 - One central suction unit
- 2 - One metal frame for hanging the suction unit on the wall
- 3 - One exhaust silencer made of plastic for the air exhaust
- 4 - Two couplings made of plastic to connect the suction pipes
- 5 - Four metal clamps for fixing the couplings
- 6 - One user guide for correct installation, use and maintenance
- 7 - An adhesive plate showing the Builder's trademark



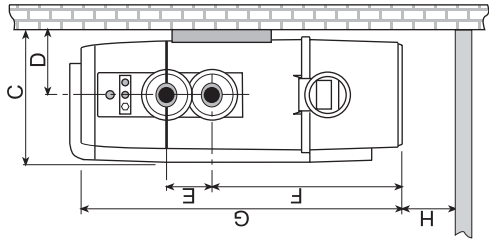
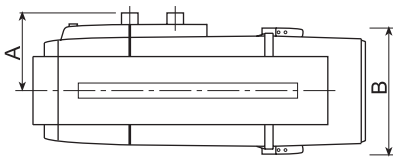
Check that the suction unit and the relevant accessories correspond to what you have ordered.

Make sure that the suction unit and the accessories have not been damaged during the handling. If this is the case, do not hesitate to contact the builder.

2.1 Construction features (see picture)



2.2 Technical features (See picture and table)



Technical features	Version EVO 200	Version EVO 550
Suction fitting Ø mm	50	50
IPX Protection degree	40	40
Power Supply Volts	230	230
Frequency Hertz	50/60	50/60
Power kW	1,1	1,4
Absorption Ampere	5	6,5
Inlet power supply Volts	12	12
Max air volume m ³ /h	182	220
Max Vacuum mbar	270	330
Filtration surface mm ²	8.000	8.000
Dust container capacity lt	20	20
Weight Kg	17,5	20
Size A mm	230	230
Size B mm	360	360
Size C mm	380	380
Size D mm	185	185
Size E mm	105	105
Size F mm	585	585
Size G mm	915	915
Size H mm (min.)	100	100
Max. Noise Level	The noise level of all suction units never exceeds 70 dB (A)	

3 - INSTALLATION



**- ATTENTION -
THE UNDERMENTIONED OPERATIONS MUST
BE CARRIED OUT BY QUALIFIED STAFF**



3.1 Place of installation

Before installing the central suction system, a suction pipes network must be installed by qualified staff. The qualified operators must also spot the best location to install the suction unit.

Suggestions for a correct installation are detailed hereinafter.

If the central suction system has to be installed in a multistorey building, the suction unit must be located at the lowest level of the building. The suction unit can be installed in a service room (for example in a garage or in a storage room), sheltered from atmospheric agents and protected from moisture and temperature changes. Choose a space far from heat sources (burners or radiators).

Leave free and well-lit space all around the suction unit to allow trouble-free maintenance and repair operations.

For any question do not hesitate to contact the Builder's Technical Assistance Service.

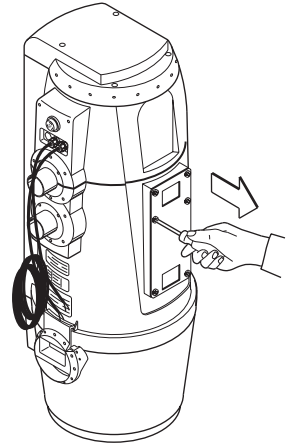
3.2 Switch from DX (right) to SX (left) model

The suction units included are usually delivered suction and exhaust pipes connections assembled on the right side of the unit (DX model); when necessary, it is possible to switch the suction unit from DX (right) to SX (left) model by assembling the inlets of the pipes on the left side (SX model).

Follow the instructions detailed below to switch from DX (right) to SX (left) model:

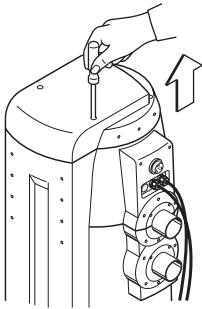
Loosen the screws and remove the rear fixing plate.

1



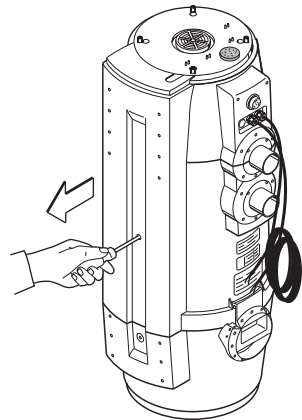
2

Loosen the screws and remove the top cover.



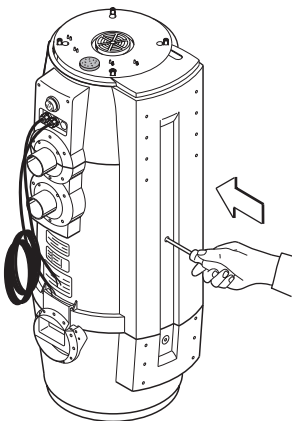
Remove the plate, loosen the screws assembled below and remove the front panel.

3

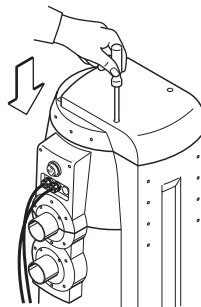


4

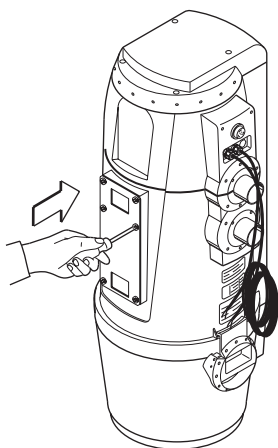
Assemble the panel on the opposite side.



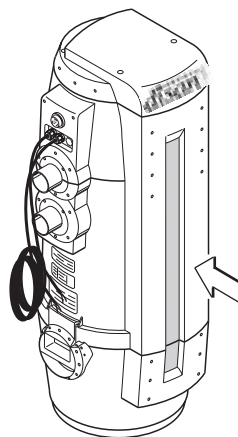
Assemble the top cover. **5**



Assemble the fixing plate. **6**



Fix the adhesive plate supplied with the central suction unit. **7**

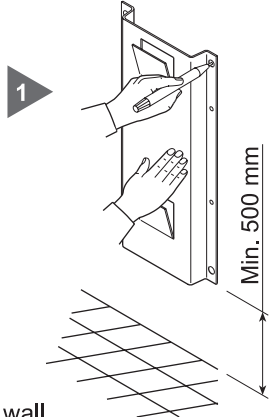


3.3 Installation of the central suction unit

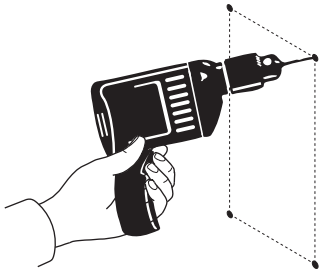
You must use the special frame (provided with the suction unit) and the special screws to hang the central suction unit firmly and permanently to a wall. Remember that the suction unit must hold up the equivalent of eight times the weight of the suction unit (please refer to par. 3.5 table).

The operator must hang the suction unit at a suitable distance from the floor to allow an easy unloading of the dust container and a trouble-free replacement of the filter. Follow the instructions detailed herebelow to hang correctly the suction unit to the wall:

Position the special frame provided with the suction unit and lay out the reference points. (if the drilling has already been carried out, go to step 3)

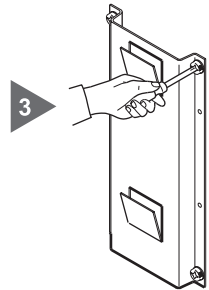


1

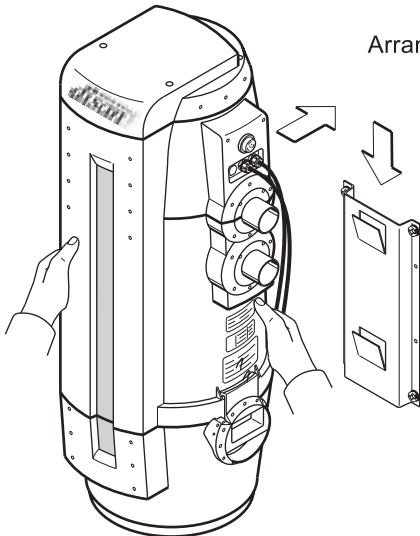


2 Drill the holes into the wall.

Arrange the frame on the wall.



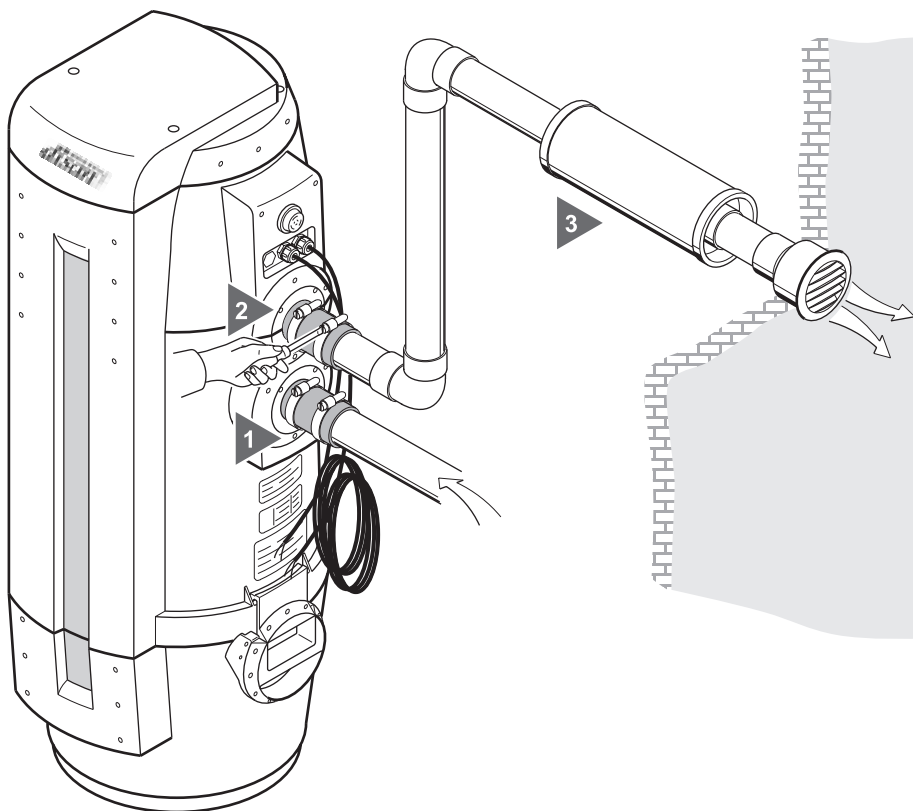
3



4 Hang the suction unit to the frame.

3.4 How to connect the pipe network (see picture)

- 1 - Use the correct fitting to connect the suction unit to the suction hose
- 2 - Use the correct fitting to connect the suction unit to the air exhaust pipe
- 3 - Stick the silencer on the exhaust pipe near the exhaust grid

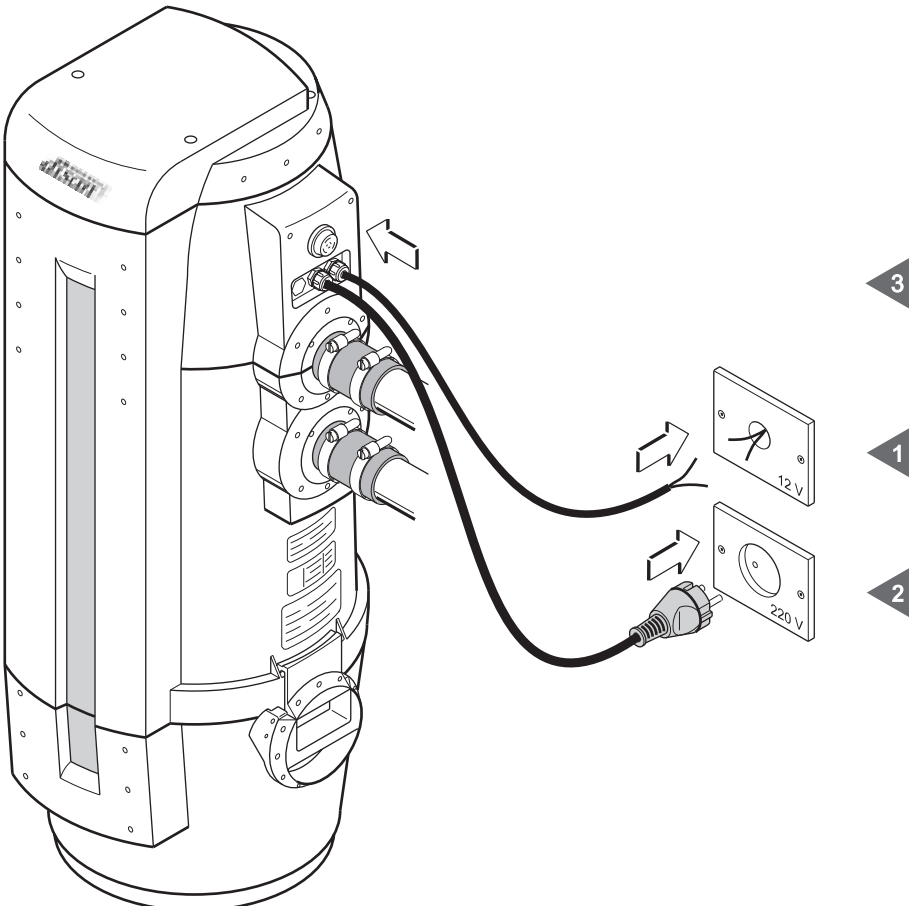


3.5 Electric system

Before plugging in the suction unit, make sure that the mains power supply corresponds to the central suction unit power supply (please refer to data indicated on the identification plate). Connect the starting signal input cable with very low security voltage.

The builder declines all responsibility for damages to persons or objects due to an electric system not in compliance with the regulations in force. Follow the instructions to carry out this operation correctly (see picture)

- 1 - Connect the starting signal input cable.
- 2 - To plug in the output line cable plug and fit it into the electric outlet.
- 3 - Press the start push- button.

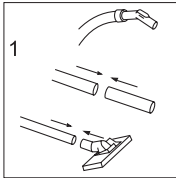


5. Operation

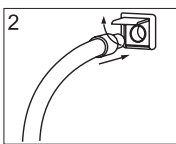
The cleaner is manufactured in order to minimize the output of noise both in the body as in the motor. During the use please pay attention to the following advices:

- Do not allow children to operate the machine without surveillance
- Do not allow the suction of the handle to come into contact the eyes or ears.
- Do not insert fingers in the handle.
- Pay attention to the ceasing of the cleaner.
- Due to the depression in the tubing and in the motor, the system remains under depression for a couple of seconds after switching it off.
- Disan take no responsibility for any harm or damage done due to misuse of the machine

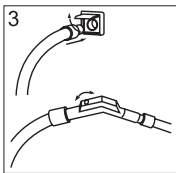
5.1 USE OF ACCESSORIES



1) Place the appropriate ends together: Into the handle; into the 2 chrome plated extension tubes or into the chrome plated telescopic pipe.

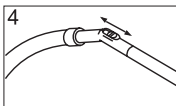


2) Lift the cover of the inlet valve and place the metal end of the vacuum hose.

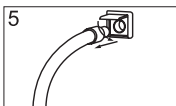


3a) If an automatic inlet valve is being used the system will start when the vacuum hose is pressed into the valve.

3b) If using a semi automatic system, the machine starts when the hose end with the metal collar is placed into the inlet valve or when the switch is operated on the handle.



4) In the event of excessive suction make use of the pressure regulation on the curved connection



5) When vacuuming is finished the machine can be switched off by removing the hose from the inlet valve and carefully closing the cover.

6. MAINTENANCE

6.1 TECHNICAL ADVICE

- - If during operation you experience an irregularity that is not dealt with in section “maintenance of the vacuum machine” please switch off the machine and get it inspected by a qualified person.

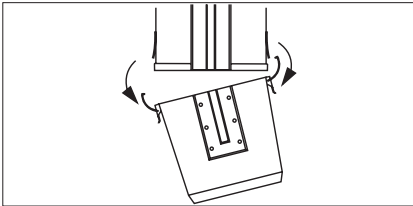
- No maintenance or repair work should be carried out on the machine unless it is disconnected from the mains first.
- We recommend every 4-5 years a general check of the electric motor, the bearings, cables including a replacement set of brushes if necessary and a new filter should be installed.

6.2 Ordinary maintenance

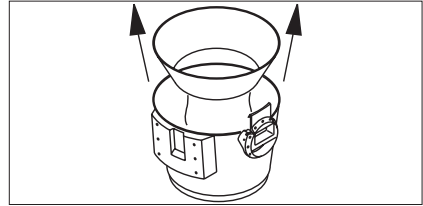
All these operations are to be carried out on the machine disconnected from the mains first and when the cleaner is chilled from the surrounding temperature. This maintenance is made to keep the cleaner working properly and to extend the lifetime of the cleaner. Disconnect the mains first also to clean the cleaner outside and pay attention that the dust canister is properly fixed on the cleaner's body.

EMPTYING OF WAST CONTAINER

1. Unclip the waste unit from the machine



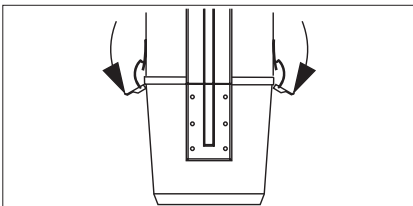
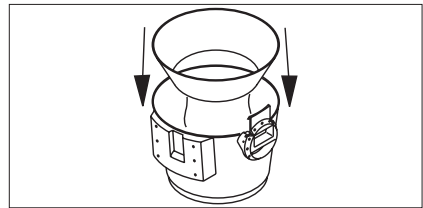
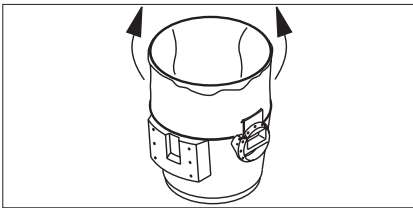
2. Remove the cyclonic separator and bag support frame



3. Empty the waste container or replace the plastic bag.

Cod. ER627 x Mod.EVO 200/550

4. Reassemble the cyclonic separator and the bag support into the waste container ensuring all parts are clean and not damaged.

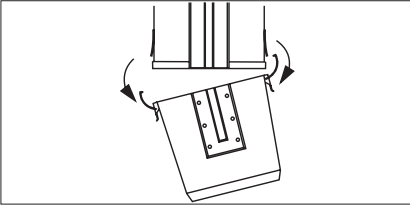


5. Carefully place the waste container up to the bottom of the machine in order to make a good seal. (Close both clamps together)

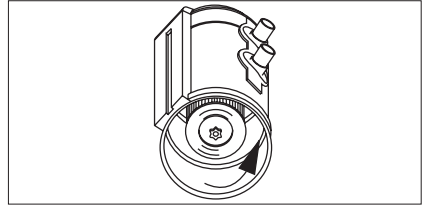
CLEANING OF THE FILTER:

Before touching the cleaner pay attention to its temperature, which due to the motor can be high. Wait until the cleaner is cold from the surrounding temperature. For a perfect operation of the system, particular attention should be paid to the condition of the filter inside the vacuum unit. It must be checked and cleaned if necessary every 2 or 3 months or if a loss of power is noticed.

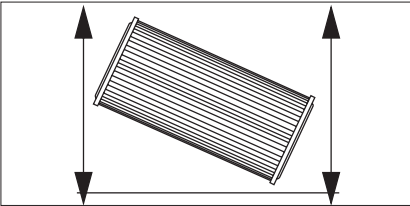
1. Uncouple the waste unit from the machine



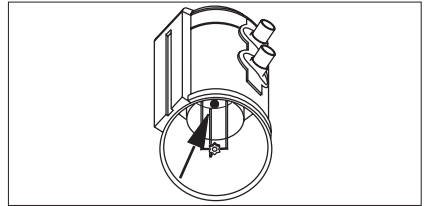
2. Rotate the finger grip anticlockwise until the filter can be removed.



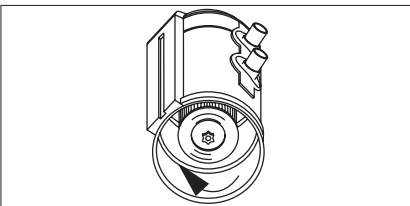
3. Extract the polyester filter and proceed to clean it using a compressor, traditional vacuum, by a simple shaking motion or with a clean water, being careful not to damage it.



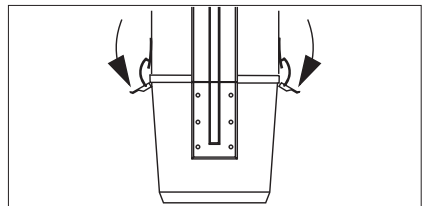
4. Check that the metal motor protection grill is not damaged or dirty.



5. Replace the filter into the machine case and retighten the knurled nut.



6. Re-connect the container with the machine being careful not to damage the seal edges which would cause a loss of suction (close both clamps together).



7. TROUBLESHOOTING

- 1. Filter is blocked.** If suction power at end of the hose is weak check to see if waste paper bag is full or damaged
- 2. Flexible hose is blocked.** If suction at the inlet valve is correct, the flexible hose could be stopped.
- 3. Damaged waste container not sealed onto machine correctly.** Check the condition of the waste container and check that it is installed onto the machine correctly, in order to prevent loss in suction. Then close both clamps together.
- 4. Several suction hoses being used at the same time.** All single phase systems are designed for use by a single person at a time.
- 5. Blockages in the pipes.** You should contact an official DISAN installer.
- 6. Safety protection.** The 10 Amp fuse will quickly blow if - The vacuum motor is exposed to an overload - The motor becomes defective - The carbon motor brushes become defective or in need of replacement.
- 7. Micro Switch on inlet is dirty or faulty.** If the machine continues to run with the hose removed or will not run with the hose installed check the operation of the micro switch on the inlet valve if the cause is not found call the installer.
- 8. Overheating.** If the motor becomes overheated due to a blocked filter or a blockage in the pipeline the thermostat will switch the motor off. It will restart when it has cooled down (8-10 minutes) If after you have followed procedures 1 and 2 it continues to over-heat please call the installer.
- 9. 12 volt supply is interrupted.** On the rare occasion that the switching cable that connects the inlet valve to the machine becomes faulty, please contact the installer.
- 10. short circuit** If the motor will not run after checking the previous points the problem is likely to be a short circuit in the system wiring and the installer should be called in.
- 11. Damage to motor or control module.** If the previous procedures do not start the system the cause is likely to be either the transformer relay or an internal problem with the motor and an installer should be called.
- 12. Hose with on/off switch is defective.** If you are using a system with a flexible pipe containing an on/off switch and you experience problems such as the machine switching on and off intermittently or it will not start or switch off you should contact the installer.
- 13. Low power in the house.** If the system fails to start and trips the main switch in the house it could be that there are too many appliances using the electricity. To rectify, switch off any non essential appliances.
- 14. Voltage supply too high or low.** Do not use the machine if the household voltage varies by more than 5 % than that stated on the identification plate.

15. Waste container is full. To empty the waste container See page 38.

16. Inlet valve seal damaged or screws not secure. Replace the seal or tighten the screws securely.

TABLE FOR TROUBLESHOOTING

	1	2	3	4	5	6	7	8	9	10	11	12	13	14	15	16
Whistling inlets																✓
Absence of suction power		✓			✓	✓	✓	✓	✓	✓	✓	✓	✓			✓
Weak suction power	✓	✓	✓	✓	✓										✓	✓
Motorbreak						✓	✓	✓	✓	✓	✓	✓				
The motor does not switch off							✓				✓	✓				
Defective running of the motor							✓	✓				✓				
Voltage supply falls down										✓			✓			

8. GUARANTEE

8.1 Terms of guarantee The guarantee conditions become valid from the date the system was first purchased. Always seek professional advice on installation and maintenance problems. Any attempt by the customer or other persons to modify or repair the system with non original parts will automatically render the warranty void and the manufacturer will not be held responsible for any damage caused either to persons or their property.

The following relieves the manufacturer of any responsibility for warranty:

- - Improper Installation
- - Improper use of the system or accessories
- - Operating against the regulations of the respective country
- - Use of non original spare parts failing to observe the operating instructions
- - Total or partial inobservance of the present manual
- - **Not sending of the guarantee coupon**

The manufacturer will under the guarantee replace any parts that are found to be defective due to faulty construction. In order for the guarantee to be valid the machine must be operated in accordance with this instruction book. All defective parts must be returned to the headquarter for inspection in their technical laboratory, and under the terms of their guarantee defective parts will be replaced. The cost of taking apart and assembly and the transport cost for the faulty part are the responsibility of the purchaser. The guarantee issued by DISAN will be valid if the portion which can be separated (see last page) is received by the manufacturer no more than 30 days after the purchase date. Replacement parts under guarantee will only be issued if the payment terms were kept by the purchaser. Any disputes will be resolved by the courts in Bolzano (Italy).

8.2 Coupon of guarantee For the registration of your guarantee right fill in the coupon on the cover of the present book and insert the data reported on the identification label of your cleaner. **Send it within 30 days from purchase.**

Certificato di garanzia - Garantieschein - Guarantee Coupon - Certificat de Garantie



Timbro e firma del venditore
Stempel und Unterschied des Verkäufers
Stamp and sign of seller
Cachet et signature

Data di acquisto:
Kaufdatum :
Date of purchase:
Date d'achat:

Indirizzo e nome dell'acquirente:
Anschrift und Name des Käufers :
Purchaser's name and address:
Nom et adresse de l'acquéreur: _____

GARANZIA 24 MESI - GARANTIE 24 MONATE - GARANTEE 24 MONTHS



Via di Mezzo ai Piani 13/A Mitterweg Boznerboden
I - 39100 BOLZANO - BOZEN
Tel. 0471/971000
Fax 0471/978888
e-mail: info@disan.com
internet: www.disan.com